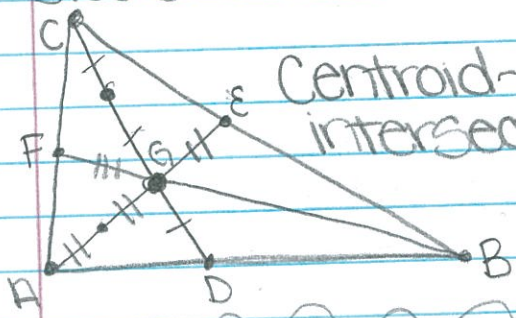
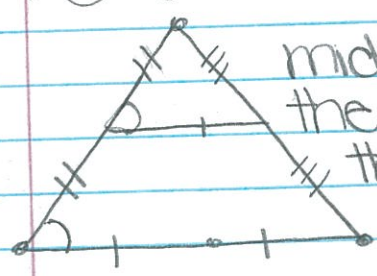


Median ~ a Segment that starts at one vertex of a triangle and ends at the midpoint of the opposite side (lines in the triangle)



Centroid ~ the point where the medians intersect



midSegment ~ a Segment that starts at the midpoint of one side and end at the midpoint of another side

\* The midSegment of a  $\Delta$  is parallel to the base

\* The midSegment of a  $\Delta$  is half the length of the base



Altitude ~ a perpendicular Segment from the vertex to the base